

Parts Manual

# 200 Series



AHE-250-P01



## Introduction

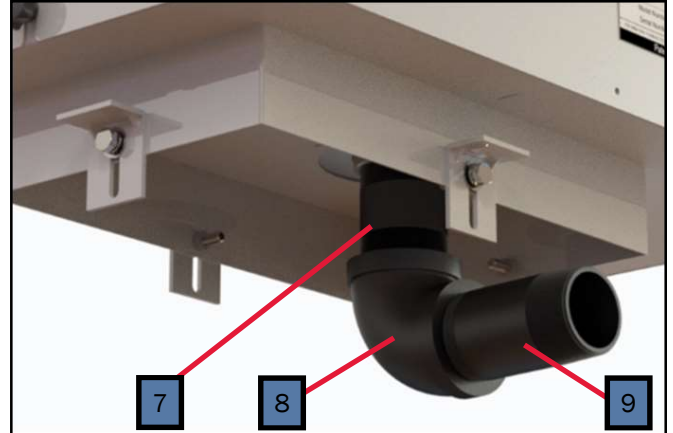
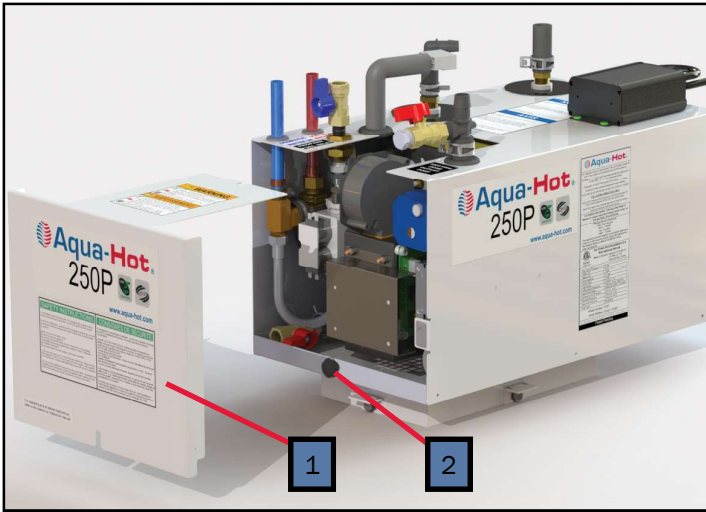
The purpose of this manual and the information contained herein, is to assist with the identification of components included with the Aqua-Hot 250P unit which may need to be in need to replacement.

You will notice that some components have been stated multiple times, this is done so as to assist the technician or end-user in correctly identifying components within the Aqua-Hot.

Propane Hot Surface Igniter .....	
Dual-Stage Propane Gas Valve .....	
Propane Blower Fan .....	
Flame Sensor.....	
<b>Antifreeze and Related Products .....</b>	<b>8</b>
Pink & Green Propylene Glycol .....	
Antifreeze Refractory Tester.....	
Propane Exhaust Tip .....	

## Contents

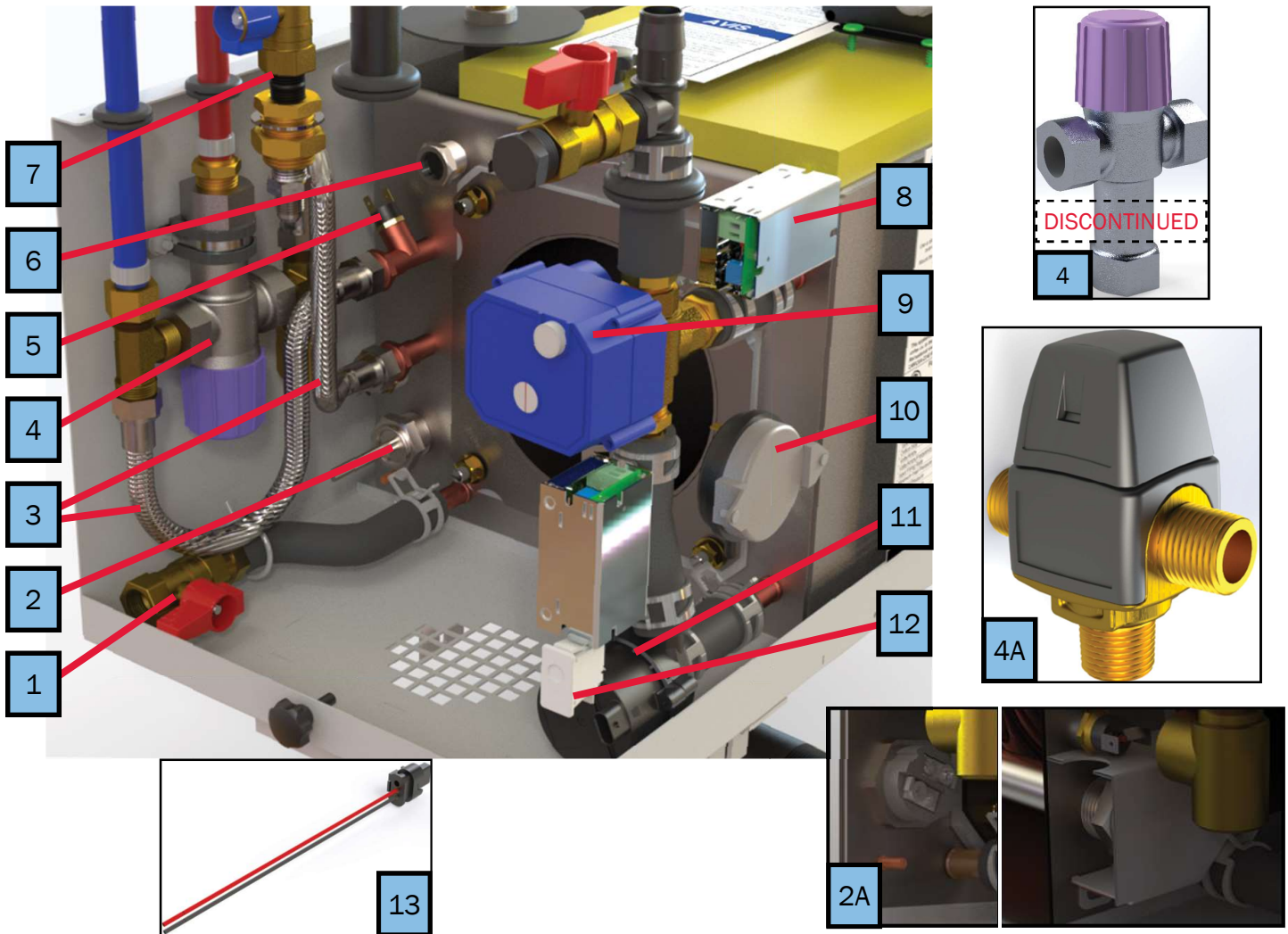
<b>General Components .....</b>	<b>3</b>
Access Cover .....	
Thumb Screw .....	
Expansion Bottle Kit .....	
3/4" Constant Tension Hose Clamp .....	
Switch Panel Assembly .....	
Rocker Switch .....	
Exhaust System Components .....	
Propane Gas Ball Valve .....	
Diesel Fuel Fitting Connections .....	
90° Hose Elbow w/ 5/8" Barb.....	
250 Series AC Electric Relay Box .....	
Brass Ball Valve 1/2" (F) NPT.....	
<b>250P Components .....</b>	<b>5</b>
Brass Ball Valve (Drain).....	
1000W AC Electric Element.....	
Lead-Free Braided Stainless Steel Faucet Connector.....	
Honeywell 140° F Tempering Valve .....	
Danfoss 120° F Tempering Valve .....	
Low-Temperature Cutoff Thermostat .....	
Propane Ball Valve.....	
Buck Boost Module .....	
Motorized Three-Way Valve.....	
Fan Validation Switch .....	
Buehler C21 Fluid Pump.....	
Interlock Switch .....	
<b>Propane Burner Components .....</b>	<b>7</b>
Refractory Insulation .....	
Exhaust Back Pressure Switch .....	



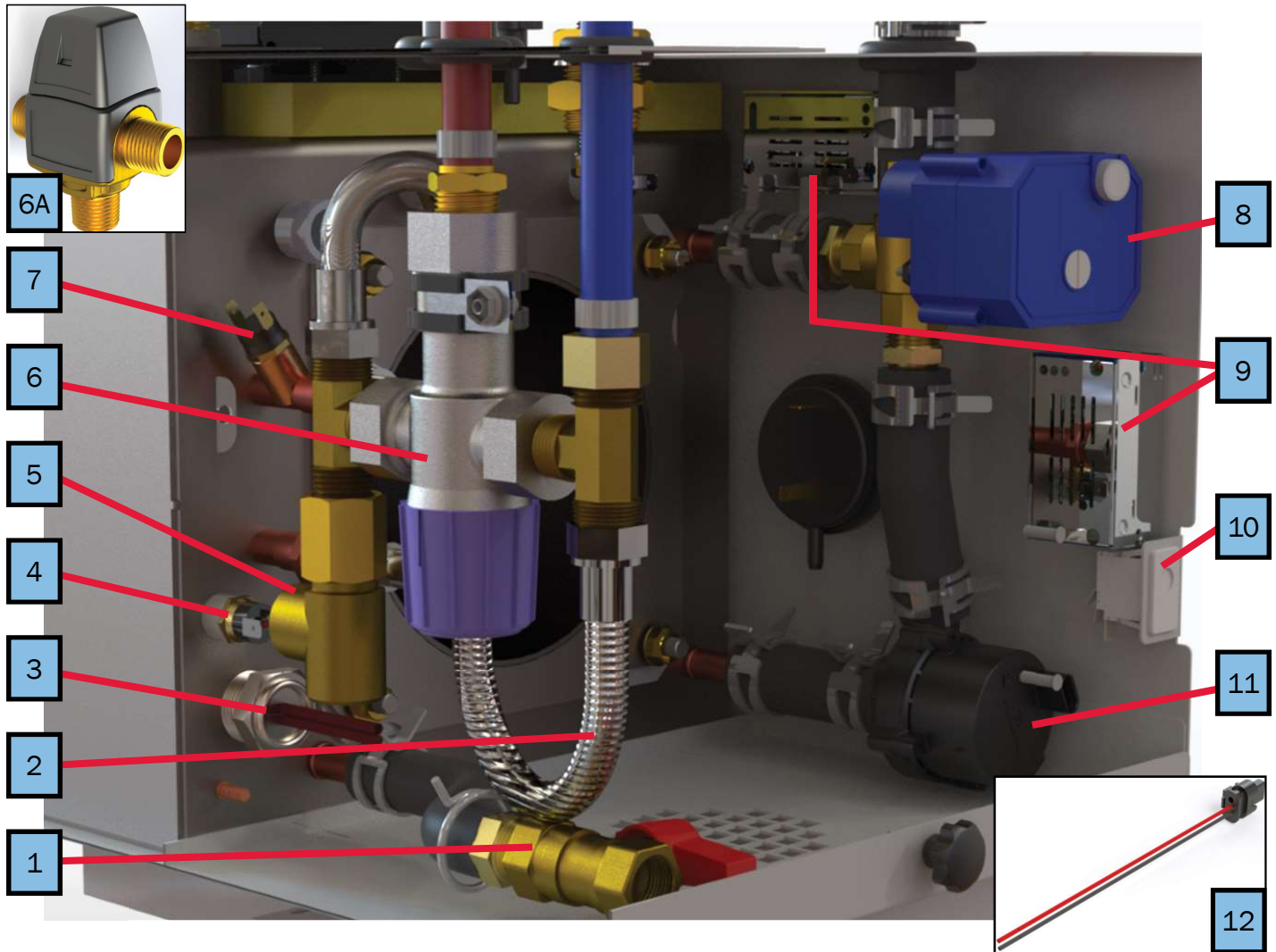
Key	Part Number	Beginning of Use	Description
1	SME-200-002	Launch	Access Cover
2	HDX-010-400	Launch	Star Grip Thumb Screw (x2)
3	MSE-200-0FB	Launch	Kit: Expansion Bottle, Fluid Sensor, Clamps, Hose
4	PLX-CTB-270	Launch	¾" Constant Tension Hose Clamp
5	ELE-000-508	Launch	12V DC Switch Panel Assembly
6	ELX-283-283	Launch	Rocker Switch
7	PLX-664-750	Launch	Pipe Nipple, 3" 1 ½" (M) NPT
8	PLX-11D-028	Launch	90° Exhaust Elbow, 1 ½" (M) NPT
9	PLX-664-730	Launch	Pipe Nipple, 4" 1 ½" (M) NPT



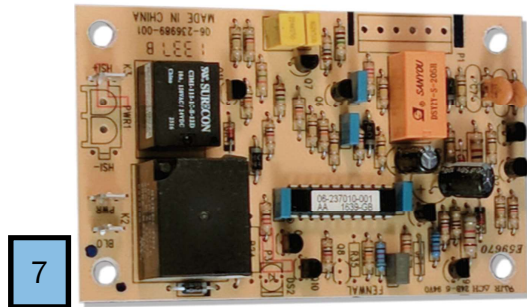
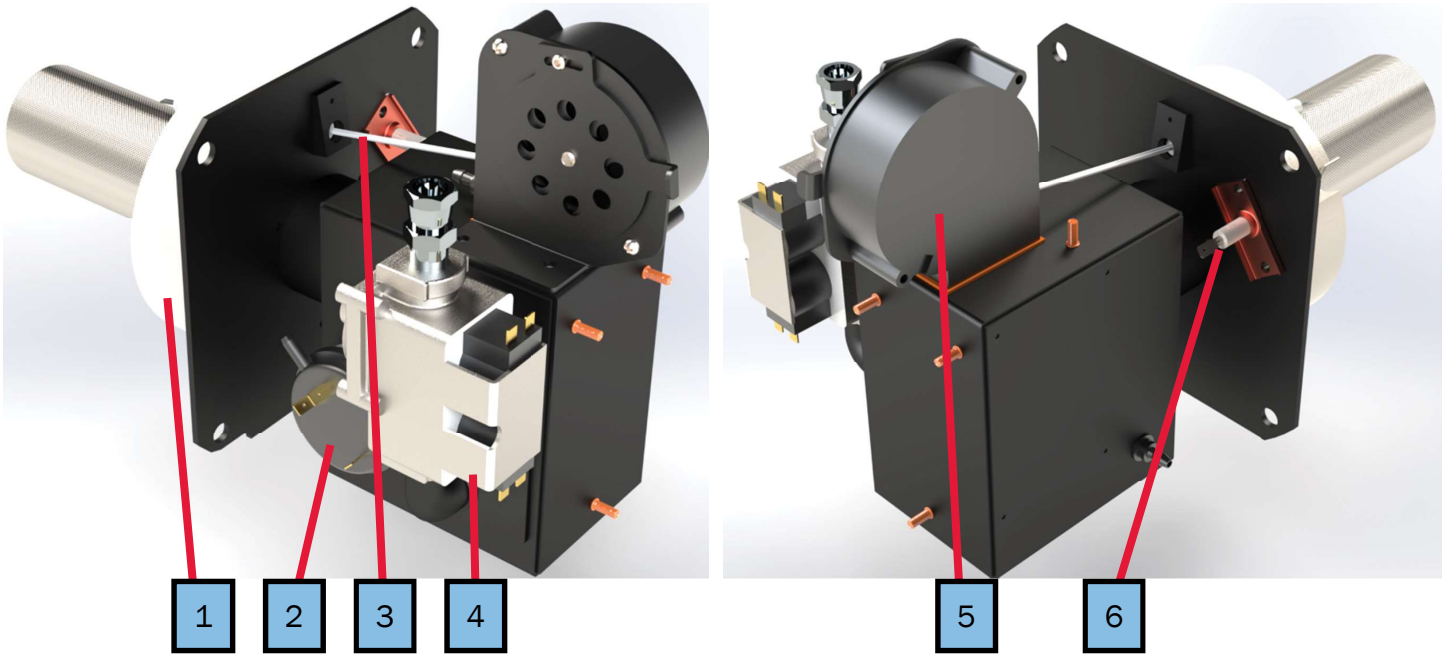
Key	Part Number	Date of Use	Description
1	PLX-375-050	Launch	Propane Gas Ball Valve (250P)
2	PLX-200-345	Launch	90° Hose Elbow w/ 5/8" Barb
3	ELX-630-001	Launch	AC Electric Relay
4	PLX-BV1-200	Launch	Brass Ball Valve 1/2" (F) NPT



Key	Part Number	Date of Use	Description
1	PLX-BV1-200	Launch	Brass Ball Valve ½" (F) NPT
2	ELX-2E7-250	Launch	1000W AC Element, ¾" (M) NPT
2A	ELX-2E7-250	4/6/2019	1kW 120V AC Electric Element 1" NPSM
3	PLX-110-050	Launch	Lead-Free Braided Stainless Steel Faucet Connector (x2)
4	PLX-09P-100	Launch	Honeywell 140° F Tempering Valve
4A	PLX-362-100	4/26/2019	Danfoss 120° F ½" NPT (M) Tempering Valve
5	ELE-LTC-200	Launch	Low-Temperature Cutoff Thermostat
6	ELE-015-011	Launch	Thermostat, Control ½" (M) NPT
7	PLX-375-050	Launch	Propane Ball Valve
8	ELE-400-025	Launch	Buck Boost Replacement Kit
9	PLE-250-201	Launch	Motorized Three-Way Valve (250P only)
10	ELX-375-010	Launch	Fan Validation Switch
11	PLX-100-900	Launch	Buehler C21 Fluid Pump
12	ELX-000-051	Launch	Interlock Switch
13	ELX-400-900	Launch	Buehler C20 Pump Harness



Key	Part Number	Date of Use	Description
1	PLX-BV1-200	Launch	Brass Ball Valve ½" (F) NPT
2	PLX-110-050	Launch	Lead-Free Braided Stainless Steel Faucet Connector (x2)
3	TBD	Launch	1000W AC Electric Element
3A	ELX-2E7-250	4/26/2019	1kW 120V AC Electric Element 1" NPSM
4	ELE-HLT-426	Launch	AC High-Limit Thermostat 215 °F
5	PLX-111-125	Launch	125PSI Pressure Relief Valve
6	PLX-09P-100	Launch	Honeywell 120 °F Tempering Valve (discontinued)
6A	PLX-362-100	4/26/2019	Danfoss 120 °F ½" NPT (M) Tempering Valve
7	ELE-LTC-200	Launch	Low-Temperature Cutoff Thermostat
8	PLE-250-P01	Launch	Motorized Three-Way Valve (250P only)
9	ELE-400-025	Launch	Buck Boost Replacement Kit
10	ELX-000-051	Launch	Interlock Switch
11	PLX-100-900	Launch	Buehler C21 Fluid Pump
12	ELE-400-900	Launch	Buehler C21 Pump Harness



Key	Part Number	Date of Use	Description
1	MSE-375-015	Launch	Refractory Insulation
2	ELX-375-035	Launch	Exhaust Back Pressure Switch
3	ELX-375-030	Launch	Propane Hot Surface Igniter
4	PLX-375-010	Launch	Dual Stage Propane Gas Valve
5	ELX-375-020-FRU	Launch	Propane Blower Fan Replacement Kit
6	ELX-375-015	Launch	Flame Sensor
7	ELX-375-025	Launch	Propane Burner Fenwal Control Card



1



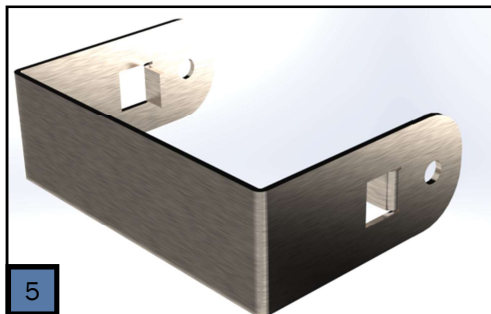
2



3



4



5



6

Key	Part Number	Date of Use	Description
1	MSX-300-275	Launch	Pink Propylene Glycol Concentrate
2	MSX-300-GRN	Launch	Green Propylene Glycol Concentrate
3	MSX-300-270	Launch	1 Gallon Pink Boiler Antifreeze
4	MSX-300-300	Launch	1 Gallon Green Boiler Antifreeze
5	SME-400-015	Launch	Propane Exhaust End Tip
6	MSX-907-162	Launch	Coolant Tester Refractometer



Parts Manual

# 200

SERIES



AHE-250-P01



Aqua-Hot Heating Systems, LLC  
7501 Miller Drive, Frederick, CO 80504

Visit us online at [www.aquahot.com](http://www.aquahot.com)  
Call us at 574-AIR-XCEL (574-247-9235)

©2021 Aqua-Hot Heating Systems, LLC. Printed in the USA