



RIDE *the* WAVE — ALL SYSTEMS GO!

The patent pending **WAVE 40** isn't just a heater—it's a revolution in comfort. By combining hot water, forced air heating, and hydronic heating in a single compact system, it redefines what's possible in an RV. Built for adventures from sea level to 10,000 feet, the WAVE 40 keeps pace with wherever your travels take you. Smart, efficient, and powerful, it's the one system designed to do it all—so you can do it all.

WHY CHOOSE THE AQUA-HOT WAVE 40?

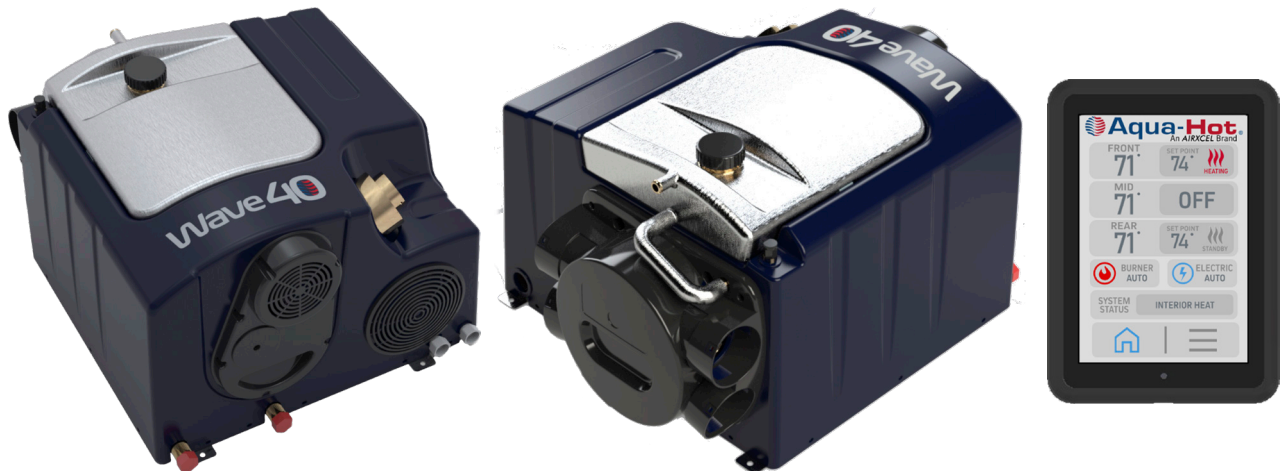
The Aqua-Hot Wave 40 is the next evolution in RV heating and hot water. With seamless integration of hot water, forced air heating, and hydronic heating, this system delivers year-round comfort in one sleek package. From automated timers, to its class-leading altitude rating, the Wave 40 is engineered for the way today's RVers live, travel, and explore.



- Patent Pending, All-in-One Comfort System**
 Combines on-demand hot water, forced air heating, and hydronic heating in one compact unit.
- Adventure-Ready Altitude Rating**
 Industry-leading performance up to 10,000 feet keeps you comfortable even in the mountains.
- Smart Control, Your Way**
 Easy-to-use digital controls with automated timers for modern convenience.
- Flexible Power Options**
 Models available in diesel or propane, plus 110V electric assist, adapting to your needs on the road.
- Dialed-In Comfort**
 Multiple heat modes, 4 heating fan speeds, and 4 air circulation speeds to match your lifestyle.
- Hydronic Loop Capability**
 Expand your comfort zone with optional hydronic heating integration.
- RVC Ready**
 Designed for seamless integration with next-gen RV control systems.
- Lightweight, Compact Build**
 At just 42 lbs., the Wave 40 maximizes space without compromising performance.

HEATING & ON-DEMAND WATER HEATER SYSTEM

| TECHNICAL SPECIFICATIONS | | DIESEL | PROPANE |
|--|--------|--|---------------|
| FUEL TYPE | | | |
| Operation Modes | | Domestic Water Heating / Interior Heating / Hydronic Heating | |
| Operating Voltage Range | VDC | 10.5 - 15 | |
| Burner Heating Power Control Range | BTU/hr | 6,800 / 13,600 / 20,400 / 27,300 / 34,200 | |
| System Power Consumption at 12Vdc Min -Max | Amps | 3 min - 8 max | 3 min - 6 max |
| AC Electric @ 110Vdc | Watt | 900 / 1800 | |
| AC Electric @ 110Vac | Amps | 7.8 / 15.6 | |
| Fuel Consumption Min - Max | gal | 0.049 / 0.246 | 0.074 / 0.37 |
| Water Heating 115°F Continuous | gal | 1.3 | |
| Fuel Pressure Max | psi | 40 | 0.5 |
| Domestic Water Pressure Max | psi | 100 | |
| Coolant Capacity | gal | 3.25 | |
| Warm Air | CFM | 75 / 180 | |
| Altitude Operation Auto | ft | 10,000 | |
| Hydronic Loop Capacity (optional) | BTU/hr | 27,300 | |
| Dimensions | in | 20L x 17.75W x 12H | |
| Weight (dry) | lbs | 42 | |



PATENT PENDING



For more information, visit:
www.aquahot.com